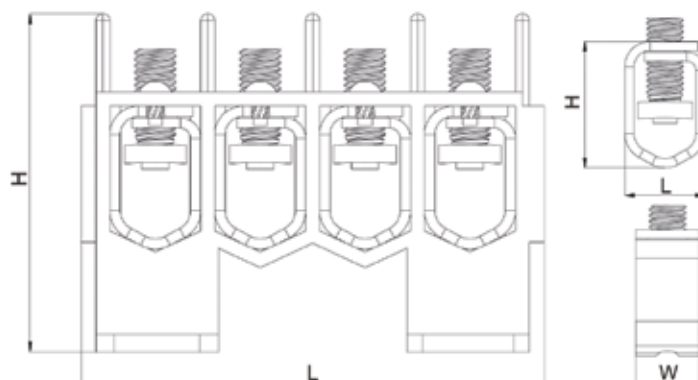
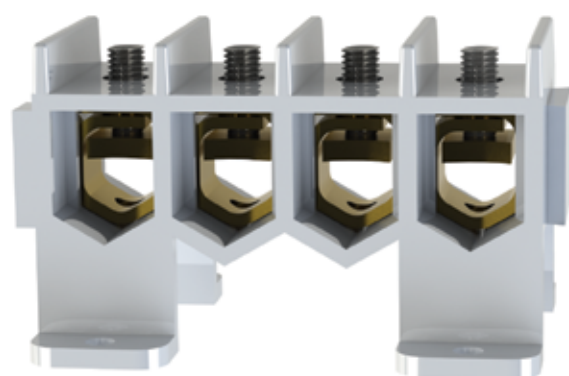


4 Pole Terminal Block RYBN Connector for 100/150 AMPS Mains Power Distribution.

- **Raw material :** Copper body 99.99% ETP grade /
Brass body CuZn37HD/IS410
Plastic body nylon 66 glass filled UL94 'V0' glowire
960 deg C
Grub screw SS 202
Brass nut ASTM B36/36M
- **Rated current :** Copper conductor 150amps / Brass 100amp
- **Rated votage :** 1000V

**Conductor cross section 35 Sqmm maximum.
Conductor diameter range 4mm to 12mm**

RYBN terminal blocks are commonly used for current distributoin from main supply to ancillary equipments.They are commonly used in all types of panels and heavy equipments where mulple crossection wires are needed for distribution from single input source.

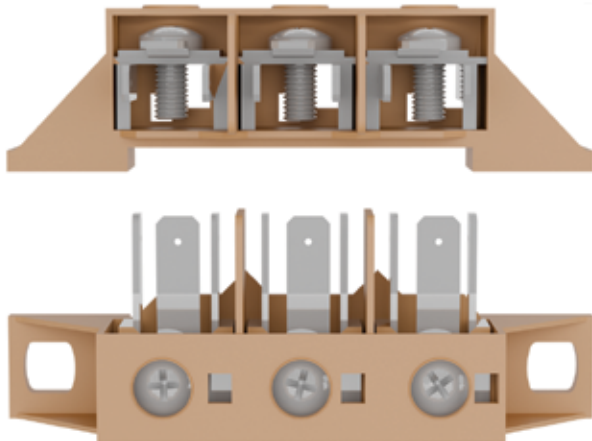
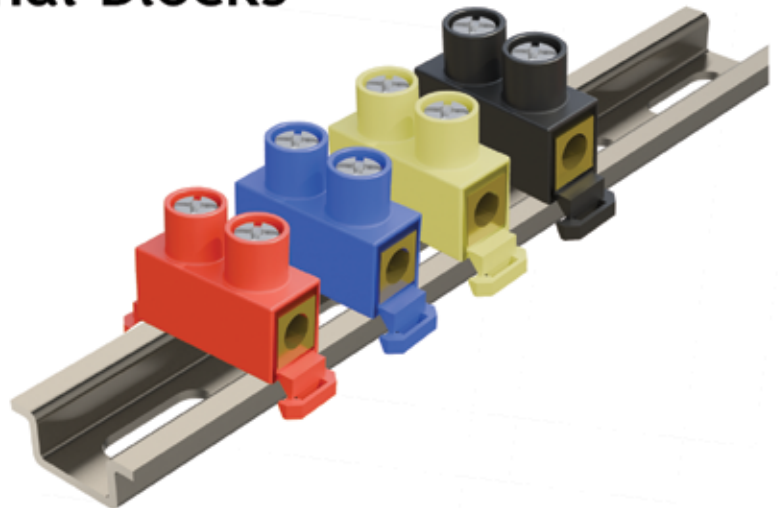


Part Code	Part Description	Housing Dimensions	Terminal Dimensions	Packing Per Carton	Master Carton Qty	MRP Per Pcs.
		LxWxH	LxWxH	Inner Pcs	Master Pcs	Rs.
FCFGBT0003	RYBN-01 TBC (65MM HEIGHT)	89x60x65	17.5x14x27.5	20	120	650.00
FCFGBT0004	RYBN-02 TBC (60MM HEIGHT)	89x60x60	17.5x14x27.6	20	120	645.00
FCFGBT0005	RYBN-03 TBC (55MM HEIGHT)	89x60x55	17.5x14x27.7	20	120	640.00
FCFGBT0006	RYBN-04 TCC (60MM HEIGHT)	89x60x65	17.5x14x27.8	20	120	710.00
FCFGBT0007	RYBN-05 TCC (55MM HEIGHT)	89x60x60	17.5x14x27.9	20	120	705.00
FCFGBT0008	RYBN-06 TCC (50MM HEIGHT)	89x60x55	17.5x14x27.10	20	120	700.00

Connectors & Terminal Blocks

Part code: FCFGNTC0023
Part description: FCDCN-01
List price (per pcs): 120.00

32 AMPS. Din rail mounted
Material: Polyamide/Brass Connector
Color : Red/ Blue/ Black/ Yellow



Mains Power Connector

Part code: FCFGNTC0025
Part description: FCMPC-01
List price (per pcs): 192.00

Mains power connector. 15 Amps. 450V
Material: PBT/Copper tin plated
Color : Brown

Din Rail / C Channel Mounted Neutral Connector

Part description: FCCN-07
List price (per pcs): 250.00

Material: Housing polyamide
Terminal bar brass
Connector M.S
Color : Black/ grey

